

# Quad City Auto Auction

309-787-6300

07/29/20

Year	Make	Model	Miles	Color	Options
14	JEEP	GRAND CHEROKEE OVERLAND 4D 4WD	101,469	BLK	6CYL,AT,AC,PW,PS,PDL,TL,CR,STEREO,SUNROO

Stock# 1066710

Serial# 1C4RJECG4EC 212111

Condition Grade: 1

Page# 1

HOOD OVERALL

COLLISION

SEVERE DAMAGE



FRONT BUMPER COVER OVERALL

COLLISION

SEVERE DAMAGE



LEFT FENDER OVERALL

COLLISION

SEVERE DAMAGE



# Quad City Auto Auction

309-787-6300

07/29/20

Year	Make	Model	Miles	Color	Options
14	JEEP	GRAND CHEROKEE OVERLAND 4D 4WD	101,469	BLK	6CYL,AT,AC,PW,PS,PDL,TL,CR,STEREO,SUNROO

Stock# 1066710

Serial# 1C4RJECG4EC 212111

Condition Grade: 1

Page# 2

LEFT FRONT DOOR LOWER

COLLISION

SEVERE DAMAGE



LEFT REAR DOOR LOWER

COLLISION

SEVERE DAMAGE



LEFT REAR QRT. PANEL OVERALL

COLLISION

SEVERE DAMAGE



# Quad City Auto Auction

309-787-6300

07/29/20

Year **14** Make **JEEP** Model **GRAND CHEROKEE OVERLAND 4D 4WD** Miles **101,469** Color **BLK** Options **6CYL,AT,AC,PW,PS,PDL,TL,CR,STEREO,SUNROO**

Stock# **1066710**

Serial# **1C4RJECG4EC 212111**

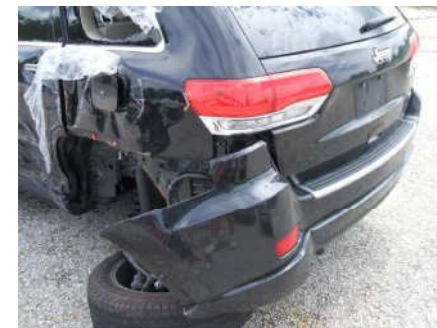
Condition Grade: **1**

Page# **3**

REAR BUMPER COVER OVERALL

COLLISION

SEVERE DAMAGE



RIGHT FENDER OVERALL

COLLISION

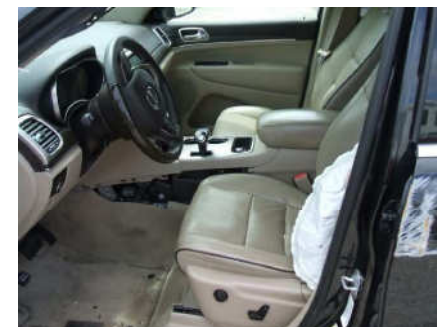
SEVERE DAMAGE



INTERIOR OVERALL

FACTORY

ACCEPTABLE



# Quad City Auto Auction

309-787-6300

07/29/20

Year **14** Make **JEEP** Model **GRAND CHEROKEE OVERLAND 4D 4WD** Miles **101,469** Color **BLK** Options **6CYL,AT,AC,PW,PS,PDL,TL,CR,STEREO,SUNROO**

Stock# **1066710**

Serial# **1C4RJECG4EC 212111**

Condition Grade: **1**

Page# **4**

INTERIOR OVERALL

FACTORY

ACCEPTABLE



ENGINE OVERALL

FACTORY

ACCEPTABLE



ODOMETER DISPLAY

FACTORY

ACCEPTABLE



# Quad City Auto Auction

309-787-6300

07/29/20

Year **14** Make **JEEP** Model **GRAND CHEROKEE OVERLAND 4D 4WD** Miles **101,469** Color **BLK** Options **6CYL,AT,AC,PW,PS,PDL,TL,CR,STEREO,SUNROO**

Stock# **1066710**

Serial# **1C4RJECG4EC 212111**

Condition Grade: **1**

Page# **5**

## Totals

Paint Labor Hrs	Body Labor Hrs	Parts Labor Hrs	PDR \$
Paint Labor Amount	Body Labor \$	Parts Labor \$	Poor Repair Hrs
Poor Paint Labor		Parts \$	Poor Repair \$
Poor Paint Labor \$			

**12 Total Damage Items**

**Total Labor Hours**

**Total Dollars Damage**

**Remarks:** NOT ROAD WORTHY;  
 3.6L; leather interior; heated seats; homelink; remote start; keyless entry; navigation;  
 FRONT/LEFT COLLISION;  
 MOTOR COMPARTMENT DAMAGE;  
 AIRBAGS DEPLOYED

